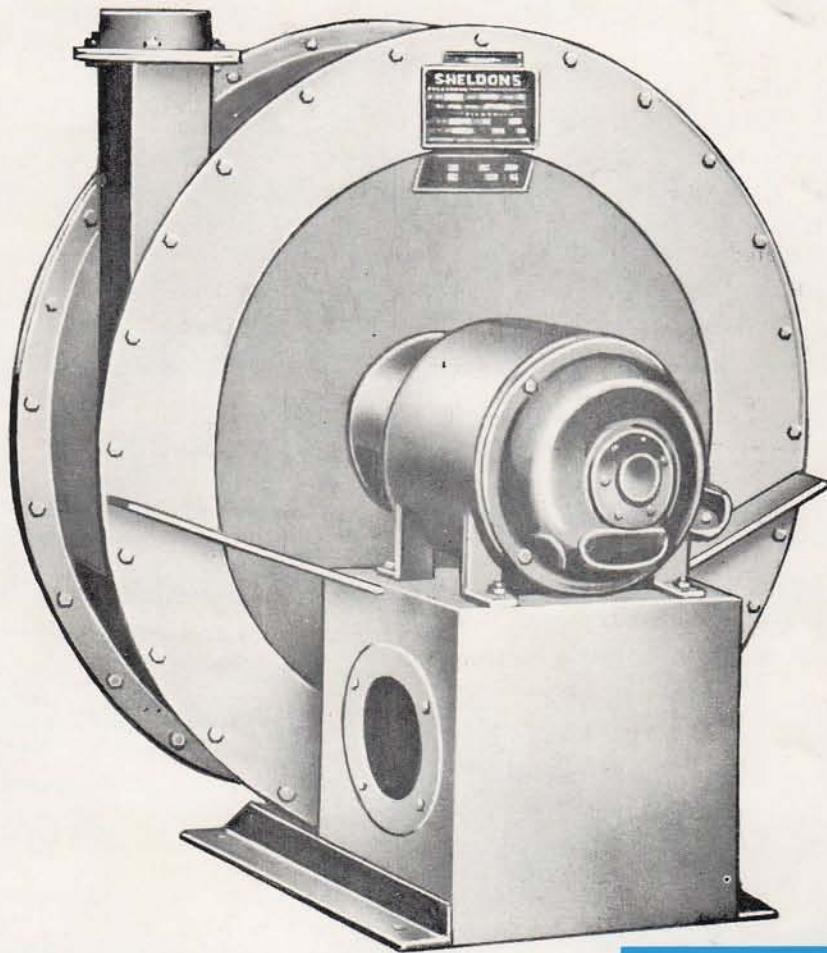


# SHELDON

## TYPE "C" BLOWERS



**REPRINT No. 905A**

**FOR SUPPLYING  
COMBUSTION AIR  
TO GAS FIRED  
OR OIL FIRED  
FURNACES ETC.**



**SHELDONS ENGINEERING LIMITED**  
Galt, Ontario, Montreal, Toronto, London, Ottawa, Hamilton, Vancouver

## TYPE "C" BLOWER WITH 25 CYCLE MOTOR AND V. BELT DRIVE

With 25 cycle motors, the maximum speed available is around 1450 r.p.m. This speed is too low for high pressure services and therefore these units are driven by means of a V. belt to step up the speed to 3400 or 3600 r.p.m.

Sixty cycle units are usually direct connected as shown in figure No. 422 or as shown on front cover.

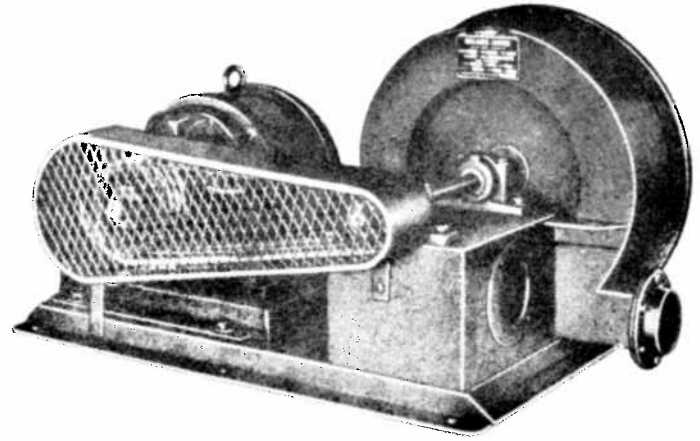


Fig. No. 445. Arrangement 1A.

## DIRECT CONNECTED BLOWERS

Blower Units, as illustrated in figure No. 422 (front cover) or direct connected units, as in figure No. 442 can only be supplied where the blower speed matches the available motor speed. Units, as in figure No. 422 have the blower wheel mounted directly on motor shaft, thus eliminating the use of bearings and coupling. This assembly is known as arrangement No. 4. Only in the larger sizes of two-stage blowers is arrangement No. 8 (figure No. 442) necessary.

SHELDON TYPE "C" BLOWERS are made in a variety of sizes and combinations of single or multi-stages to cover a wide range of capacities and pressures. In this bulletin we list forty-two sizes covering single stage and two-stage blowers, as usually supplied for average industrial work.

## CAPACITY RANGE

The performance ratings on page No. 4 and No. 5 tabulate the air quantities and pressures as well as the horse powers of motors to be used for single stage and two-stage blowers. The pressure range is from 10 ozs. to 32 ozs. P.S.I. Where greater air quantities or lower pressures are required, we recommend the use of our type PH Blower. Ask for catalogue No. 950.

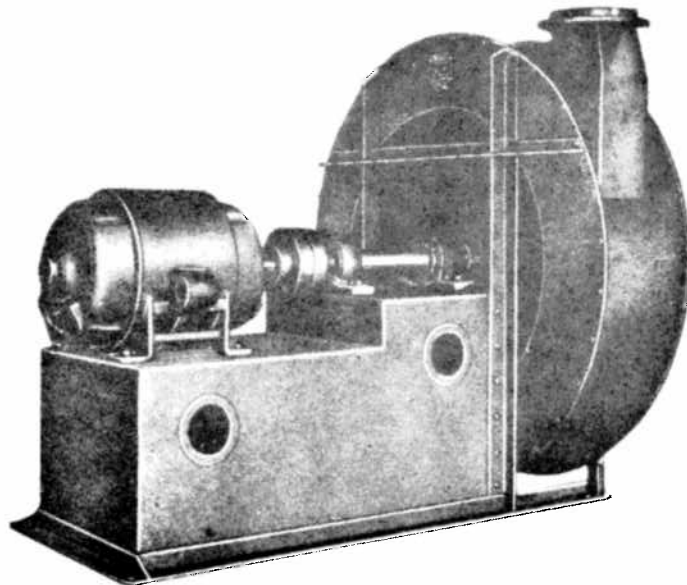


Fig. No. 442. Arrangement 8.

Fig. No. 442 shows a large two-stage type "C" Blower, made up in arrangement No. 8, with ball bearings, flexible coupling and direct connected motor. As these blowers are in all cases used for heavy-duty service, heavy construction and rigid bracing is of prime importance to prevent vibration. Blower wheels are also of heavy construction and are carefully balanced. These blowers are smooth-running, free from vibration and are very quiet in operation.

## TYPE "C" CENTRIFUGAL BLOWERS

FOR DIRECT CONNECTION TO 60 CYCLE 3400 R.P.M. MOTORS (Arrangement 4)  
or FOR V BELT DRIVE FROM 25 CYCLE 1440 R.P.M. MOTORS (Arrangement 1A)

Size	Motor H.P.	Pressure in ozs. sq. in.	Max. C.F.M. at full load speed	Dia. Inlet Inches	Dia. Outlet Inches	Approx. Shipping Weight
14021	5/4	10	95	3	2 1/2	310
14031	1	10	160	3 1/2	3	330
14041	1 1/2	10	290	4	4	355
14051	2	10	410	5	5	395
11042	1	12	135	3	2 1/2	345
11052	1 1/2	12	220	4	3	385
16031	2	12	260	4	3 1/2	430
16041	3	12	415	5	5	450
16061	5	12	800	6	6	520
16081	7 1/2	12	1300	8	8	590
13022	1	16	80	2 1/2	2	320
13032	1 1/2	16	150	3	2 1/2	375
13042	2	16	220	4	3 1/2	430
13052	3	16	370	5	4	460
18021	3	16	280	4	3 1/2	430
18031	5	16	570	6	5	460
18051	7 1/2	16	960	8	6	540
18061	10	16	1300	8	8	700
18081	15	16	2000	9	8	800
14022	1 1/2	20	95	3	2 1/2	385
14032	2	20	160	3 1/2	3	425
14042	3	20	290	4	4	450
14052	5	20	530	5	5	500
20031	7 1/2	20	700	6	6	620
20041	10	20	1010	8	8	750
16022	3	24	162	4	3	450
16032	5	24	330	4	4	530
16052	7 1/2	24	630	5	5	625
16062	10	24	840	6	6	680
17022	5	28	265	4	3 1/2	510
17032	7 1/2	28	470	5	4	610
17042	10	28	675	6	6	700
17062	15	28	1090	8	8	800
17102	20	28	1570	10	10	900
17122	25	28	2000	12	12	1000
18022	7 1/2	32	355	5	4	640
18032	10	32	535	6	6	725
18042	15	32	895	8	8	800
18062	20	32	1310	10	10	900
18082	25	32	1680	10	10	1000
18102	30	32	2150	12	12	1100
18122	35	32	2530	12	12	1200
18162	75	32	4000	16	16	1350

All Type "C" blowers are made reversible for discharge but not for rotation.  
Blowers with size number ending in 1 are single stage blowers.  
Blowers with size number ending in 2 are two stage blowers.  
The motors for 2 stage blowers must be provided with special shaft extension.  
Shipping weights include weight of motor.

## TYPE "C" CENTRIFUGAL BLOWERS

Size	Arr.	Blower Speed	Motor H.P.	Pressure in ozs. sq. in.	C.F.M.	Diam. Inlet	Diam. Outlet	Approx. Wt.
19032	1A, 4 or 8	3500	10	36	533	6	6	800
19052	1A, 4 or 8	3500	15	36	860	8	7	950
19072	1A, or 8	3500	20	36	1225	9	8	1060
19092	1A, or 8	3500	25	36	1580	11	10	1160
20032	1A, or 8	3500	15	40	700	6	6	1100
20042	1A, or 8	3500	20	40	935	7	6	1270
20052	1A, or 8	3500	25	40	1170	8	7	1420
20062	1A, or 8	3500	30	40	1500	10	8	1545
18023	1A	3500	10	48	355	5	4	775
18033	3 or 7	3500	15	48	600	7	6	975
18043	3 or 7	3500	20	48	905	7	7	1120
21032	4	3500	25	48	1010	8	7	1370
21042	4	3500	30	48	1185	8	8	1510
21062	4	3500	40	48	1950	10	8	1730
23022	1A, or 8	3500	30	60	885	8	7	2650
23042	1A, or 8	3500	50	60	1775	10	10	3340
23062	1A, or 8	3500	75	60	2860	10	10	3820
23102	1A, or 8	3500	100	60	4100	12	12	4530
28062	1A, 4 or 8	1450	15	16	2000	12	10	2990
28062	1A, 4 or 8	1750	25	24	2410	12	10	2990
28062	1A	2250	50	40	2750	12	10	2990
14055	3 or 7	3500	15	56	500	5	5	840
14056	3 or 7	3500	15	66	500	5	5	1000
14057	3 or 7	3500	20	77	570	5	5	1165
14058	3 or 7	3500	20	92	450	5	5	1330
14059	3 or 7	3500	25	128	440	5	5	1495
24082	3 or 7	3500	100	75	3500	12	10	3600
24083	3 or 7	3500	200	112	4090	14	12	4530
24084	3 or 7	3500	250	150	4500	14	14	5450
35022	4	1450	20	24	1400	10	10	3550
35032	4	1450	30	24	2000	10	10	4000
35052	7	1450	40	24	3200	12	10	4750
35082	7	1450	50	24	4100	12	12	5500
35102	7	1450	75	24	6100	12	12	6000

Arrangement A-1 indicates V. Belt Drive with two bearings on drive side.

Arrangement 3 indicates V. Belt Drive with one bearing on each side of Blower.

Arrangement 4 indicates impeller carried on motor shaft.

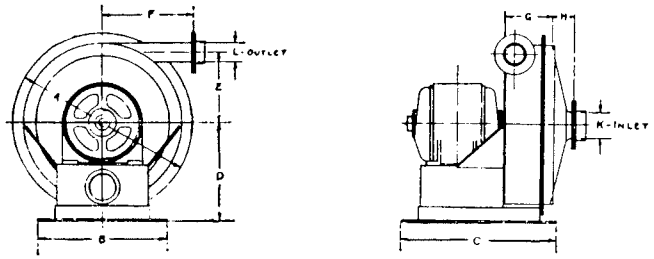
Arrangement 7 indicates one bearing on each side of Blower and with direct coupled motor.

Arrangement 8 indicates both bearings on drive side and with direct coupled motor.

Dimension drawings furnished upon request.

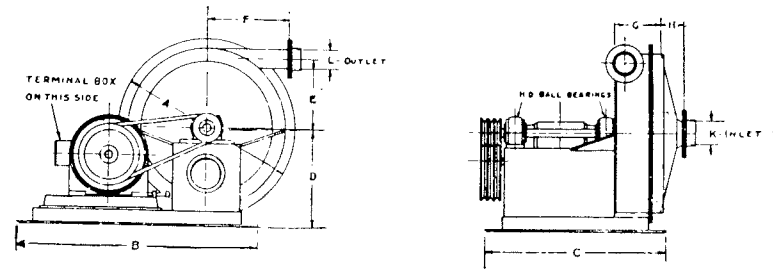
# TYPE "C" CENTRIFUGAL BLOWERS

ARRANGEMENT No. 4



DIMENSIONS IN INCHES

ARRANGEMENT No. 1A



DIMENSIONS IN INCHES

Size	A	B	C	D	E	F	G	H	K	L	Size	A	B	C	D	E	F	G	H	K	L
14021	27	15	18	14	10 3/4	12 1/2	4 1/4	3	3	2 1/2	14021	27	34	18	14	10 3/4	12 1/2	4 1/4	3	3	2 1/2
14031	28 1/4	15	19	15	11 1/4	13	4 3/4	3	3 1/2	3	14031	28 1/4	36	22	15	11 1/4	13	4 3/4	3	3 1/2	3
14041	29 1/2	16	20	15 1/2	11 1/4	13 1/2	5 1/2	3	4	4	14041	29 1/2	38	23	15 1/2	11 1/4	13 1/2	5 1/2	3	4	4
14051	31 3/8	16	21	16 1/2	11 1/4	14	6	3	5	5	14051	31 3/8	38	24	16 1/2	11 3/4	14	6	3	5	5
11042	24	15	20	13	9 1/4	11 1/2	6 1/2	3	3	2 1/2	11042	24	36	22	13	9 1/4	11 1/2	6 1/2	3	3	2 1/2
11052	25 1/2	16	23	13 1/2	10	12 1/4	7 3/4	3	4	3	11052	25 1/2	37	23	13 1/2	10	12 1/4	7 3/4	3	4	3
16031	30 1/2	16	21	16	12	14 1/2	6	3	4	3 1/2	16031	30 1/2	38	24	16	12	14 1/2	6	3	4	3 1/2
16041	32 1/2	17	23	17	12 1/4	15 1/2	7	3	5	5	16041	32 1/2	40	25	17	12 1/4	15 1/2	7	3	5	5
16061	34 1/2	17	24	18	12 3/4	16 1/2	8	3	6	6	16061	34 1/2	42	28	18	12 3/4	16 1/2	8	3	6	6
16081	36 1/2	19	28	19	12 3/4	17 1/2	10	3	8	8	16081	36 1/2	45	33	19	12 3/4	17 1/2	10	3	8	8
13022	24	15	20 1/2	13	9 1/2	11 1/4	6 1/8	3	2 1/2	2	13022	24	36	22	13	9 1/2	11 1/4	6 1/8	3	2 1/2	2
13032	25	16	22	13 1/2	9 3/4	11 3/4	6 1/8	3	3	2 1/2	13032	25	37	23	13 1/2	9 3/4	11 3/4	6 1/8	3	3	2 1/2
13042	26	16	23 1/2	14	9 3/4	12 1/4	7 3/4	3	4	3 1/2	13042	26	37	24	14	9 3/4	12 1/4	7 3/4	3	4	3 1/2
13052	27 1/2	17	25	14	10 1/4	13	8 3/8	3	5	4	13052	27 1/2	40	25	14	10 1/4	13	8 3/8	3	5	4
18021	36	17	23	19	14 3/4	16 1/2	6	3	4	3 1/2	18021	36	42	25	19	14 3/4	16 1/2	6	3	4	3 1/2
18031	37 1/2	17	24	19 1/2	14 3/4	17 1/2	6 3/4	3	6	5	18031	37 1/2	44	28	19 1/2	14 3/4	17 1/2	6 3/4	3	6	5
18051	39	19	26	20	15	18	7 1/8	3	8	6	18051	39	46	32	20	15	18	7 1/8	3	8	6
18061	40 1/2	20	29	21	14 3/4	19	8 3/4	3	8	8	18061	40 1/2	48	36	21	14 3/4	19	8 3/4	3	8	8
18081	42	22	30	22	15 1/2	19 1/2	9 1/4	3	9	8	18081	42	50	37	22	15 1/2	19 1/2	9 1/4	3	9	8
14022	26	16	22	14	10 1/4	12	6	3	3	2 1/2	14022	26	37	23	14	10 1/4	12	6	3	3	2 1/2
14032	27	16	23	14	10 1/2	12 1/2	6 5/8	3	3 1/2	3	14032	27	37	24	14	10 1/2	12 1/2	6 5/8	3	3 1/2	3
14042	28 3/4	17	24	15	10 7/8	13 1/2	7 3/4	3	4	4	14042	28 3/4	40	25	15	10 7/8	13 1/2	7 3/4	3	4	4
14052	29 3/4	17	27 1/2	16	10 7/8	14	10 3/8	3	5	5	14052	29 3/4	40	28	16	10 7/8	14	10 3/8	3	5	5
20031	42	19	27	22	16 1/2	19 1/2	7 7/8	3	6	6	20031	42	46	32	22	16 1/2	19 1/2	7 7/8	3	6	6
20041	44	20	29	23	16 1/2	20 1/2	8 3/8	3	8	8	20041	44	48	36	23	16 1/2	20 1/2	8 3/8	3	8	8
16022	29	17	23	15	11 1/2	13 1/2	6 1/2	3	4	3	16022	29	40	25	15	11 1/2	13 1/2	6 1/2	3	4	3
16032	30 1/2	17	25 1/2	16	11 3/4	14	8 1/4	3	4	4	16032	30 1/2	42	28	16	11 3/4	14	8 1/4	3	4	4
16052	34	19	28	18	13	16	9 1/2	3	5	5	16052	34	45	32	18	13	16	9 1/2	3	5	5
16062	35 1/2	20	31	18 1/2	13 1/4	16 1/2	10 1/2	3	6	6	16062	35 1/2	48	36	18 1/2	13 1/4	16 1/2	10 1/2	3	6	6
17022	32 1/2	17	25	17	13	15	8	3	4	3 1/2	17022	32 1/2	42	28	17	13	15	8	3	4	3 1/2
17032	34	19	28	18	13 1/2	16	8 3/4	3	5	4	17032	34	45	32	18	13 1/2	16	8 3/4	3	5	4
17042	36	20	31	19	13 1/2	17	11	3	6	6	17042	36	48	36	19	13 1/2	17	11	3	6	6
17062	38	22	35	20	13 1/2	18	14 1/4	3	8	8	17062	38	50	38	20	13 1/2	18	14 1/4	3	8	8
17102	39	22	39	20 1/2	13	18 1/2	17	3	10	10	17102	39	52	40	20 1/2	13	18 1/2	17	3	10	10
17122	40	23	43	21	12 1/2	19	19 3/4	3	12	12	17122	40	54	42	21	12 1/2	19	19 3/4	3	12	12
18022	36	19	28	19	14 1/2	16 1/2	9 1/2	3	5	4	18022	36	46	32	19	14 1/2	16 1/2	9 1/2	3	5	4
18032	37 1/2	20	31	19 1/2	14 1/4	17 1/2	10 1/8	3	6	6	18032	37 1/2	48	36	19 1/2	14 1/4	17 1/2	10 1/8	3	6	6
18042	39	22	33	20 1/2	14	18	13 1/4	3	8	8	18042	39	50	38	20 1/2	14	18	13 1/4	3	8	8
18062	40 1/2	22	38	21	13 3/4	19	16 3/4	3	10	10	18062	40 1/2	53	40	21	13 3/4	19	16 3/4	3	10	10
18082	42	23	41	22	14 1/2	19 1/2	17 1/2	3	10	10	18082	42	54	42	22	14 1/2	19 1/2	17 1/2	3	10	10
18102	43 1/2	23	44	22 1/2	14 1/4	20 1/2	19 3/4	3	12	12	18102	43 1/2	56	46	22 1/2	14 1/4	20 1/2	19 3/4	3	12	12
18122	45	23	45	23 1/2	15	21	21	3	12	12	18122	45	59	48	23 1/2	15	21	21	3	12	12

Dimensions are approximate only.